



Teamcenter Express Manufacturing

Preconfigured information management system for part manufacturing

fact sheet

www.ugs.com/teamcenterexpress

► Summary

UGS' Teamcenter® Express cPDM software supports tasks and processes for design through manufacturing with the introduction of Teamcenter Express Manufacturing. These capabilities are based on UGS' proven Teamcenter Manufacturing offering and are delivered as a preconfigured solution to ensure rapid implementation and low total cost of ownership.

Benefits

Faster access to the right design and manufacturing data at the right time

Consistent and efficient transfer of data between disciplines

Less duplication and increased standardization

Increase reuse of proven methods

Features

Associative interfaces with NX™ CAM, NX CAM Express, NX and Solid Edge® software

Manage NX CAM setups and NC files using *Part Planner*

View setup information and CAM output files using web-based *Manufacturing Structure Viewer*

Manage machine tools, cutting tools and fixtures in the integrated *Resource Manager library*

Business drivers and challenges in part manufacturing

In today's global markets there is increasing pressure for manufactured products to be delivered to market faster while maintaining best-in-class quality and with strict cost control. Some of the specific challenges that face part manufacturers are the lack of connectivity

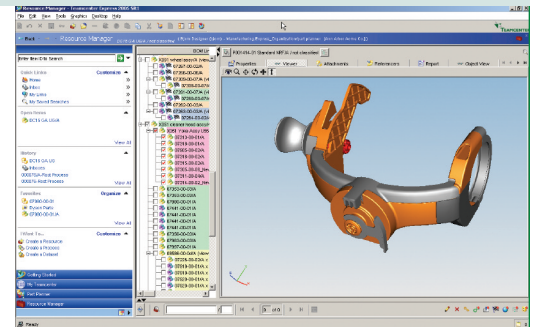
between the different teams involved in the design-through-manufacturing process, the difficulty to find and reuse proven manufacturing methods and the difficulty in finding the correct data. If these challenges are not addressed the manufacturer can be met with higher planning and manufacturing costs, longer new product introduction cycles and reduced product and process quality.

Teamcenter Express Manufacturing helps address these challenges by providing a single, shared source of design and manufacturing data that supports streamlined and integrated work processes, easy retrieval of the correct data and re-use of proven manufacturing methods.

NX CAM and NX CAM Express data and process management

Teamcenter Express Manufacturing provides a preconfigured environment that enables NX CAM users to manage the data they create and reference in a controlled and consistent way.

- Utilize a bi-directional and associative interface to store NX CAM setups in Teamcenter Express Manufacturing
- Access and retrieve Library Resources from Resource Manager
- Manage the NX CAM session in a secure and structured environment
- Store the associated NC files and shop floor documentation files with the relevant setup
- Manage the CAM setup templates and the documentation templates



Manufacturing planning

Teamcenter Express Manufacturing enables planning engineers to work more efficiently and to collaborate better with other departments.

- Find parts and review part/setup associations
- Review associated resources
- Review NC output files and shop floor documentation
- Generate planning reports and shop documents
- Release the manufacturing process to production
- Manage engineering changes and perform impact analysis
- Launch authoring applications

Resource management

Teamcenter Express Manufacturing provides an integrated solution for classifying and managing the resources required for part manufacturing data including:

Classification of manufacturing resources:

- Provides a user defined classification library for resource components and assemblies
- Controls access to groups, classes and classification instances
- Offers a separate application to setup and maintain the classification hierarchy

Resource Manager interface:

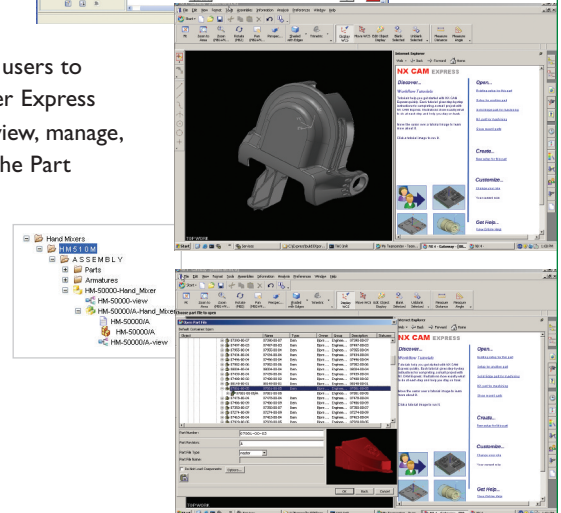
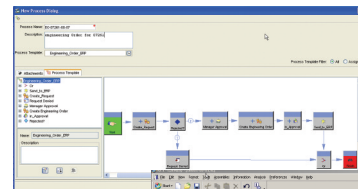
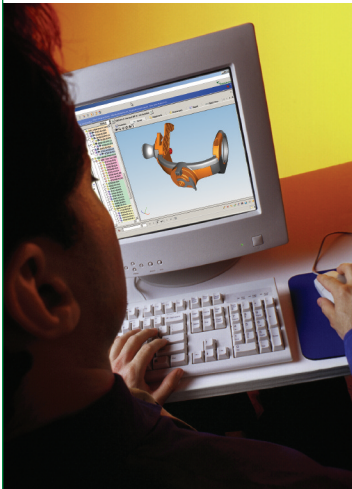
- Allows users to create resource components and resource assemblies
- Automated routines for reporting, change control and workflow processes
- Manages related documents and CAD data

Data Repository including management of the following data types:

- Machine tools
- Cutting tools (cutters, holders, adapters, inserts)
- Tool assemblies
- Fixtures
- Devices

Teamcenter Express Manufacturing is delivered in the following optional modules:

- *Author* enables NX CAM and NX CAM Express users to manage NC programming data within Teamcenter Express
- *Part Planner* gives the user the ability to search, view, manage, report and send CAM data to the shop floor. The Part Planner module includes the Manufacturing Structure Viewer, a web based tool for viewing setup and output files
- *Resource Manager* allows the user to author and manage supporting resources like tools and fixtures and apply classification rules to these resources



Contact

Teamcenter Express

Americas 800 807 2200
 Europe +44 (0) 1202 243455
 Asia-Pacific +61 2 8218 5589

www.ugs.com/teamcenterexpress

